



Chemiebau Zimmermann
SYSTEMIC SOLUTIONS FOR COMPLEX FLOOR REQUIREMENTS



Corporate Presentation

Chemiebau Zimmermann GmbH
Ludwig-Erhard-Straße 8
45891 Gelsenkirchen - Germany



Chemiebau Zimmermann is ...

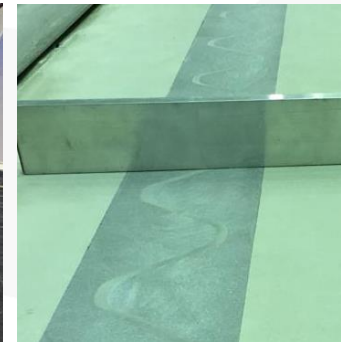
- a **family business** based in Gelsenkirchen/Germany that offers **systemic solutions for complex floor requirements**.
- specialised in **environmental measures** in accordance with the **Water Resources Act** in the **petroleum and chemical industries** as well as
- focussed on **flooring systems with high technical and quality requirements** in the **logistics, tech and aerospace industries** (super flat, antistatic, particularly hard, robust and at the same time highly flexible floors).
- **regularly inspected** as a **Water Resources Act** specialised company for **quality assurance** and regularly taking part in **Safety Certificate Contractors (SCC)** training courses in order to meet the **highest standards of safety, health and environmental protection**.
- through **continuous monitoring processes** in **ecological, economic and social terms** a proven **sustainable company**.



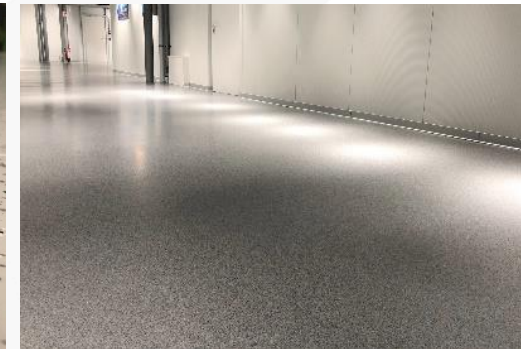
SICHERHEITS
CERTIFIKAT
CONTRAKTOREN

- **Manufacture, maintenance and remediation of environmental measures** in accordance with the **Water Resources Act** as well as of **highly demanding floor surfaces** in the areas of
 - **Joint technology**
 - **Synthetic resin coatings**
 - **Mineral substrates**
 - **Anchors in accordance with the Water Resources Act**
- **Manufacturers of special joint sealants** and **formulators of resins.**

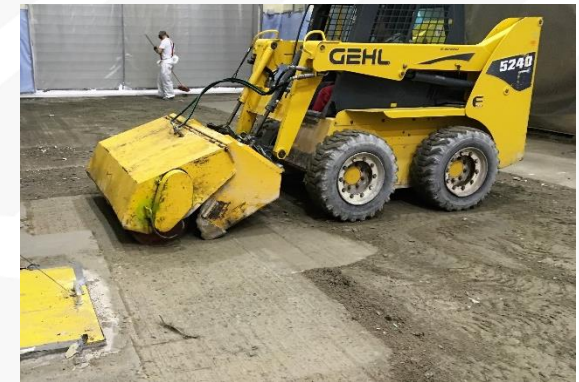
- **Entire spectrum of joint formation in building construction and civil engineering** for over 40 years.
- **Joints in accordance with the Water Resources Act**, particular importance in chemical plants, refineries, tank farms and filling stations.
- **Developing our own sealants** for joints with **high hygiene requirements** - primarily used in the food industry.
- Extensive experience in **installing high-tech floor joint profiles**
 - Carbon fiber-reinforced polymer composite profiles **installed flush with the floor**
 - **Extreme strength** and offer **permanent bridging of movements**
 - Enables **high load distribution** and thus leads to **minimal vibrations** from and for hovercraft, vehicle, and forklift traffic.



- Partner for the **manufacture, maintenance and remediation of liquid-tight, anti-slip, antistatic, highly flexible, particularly hard, robust and super flat synthetic resin coatings.**
- **Specialized in the requirements of the high-tech industry and petroleum companies, such as production facilities of chip and automobile manufacturers, test rooms of space organizations, refineries, tank farms and waste disposal facilities.**
- **Coating systems are tailored to the customer's requirements so that they can reliably withstand long-term loads and intensive testing.**



- **Repairs of mineral substrates**, such as concrete and screed surfaces, in the form of **chipping**, **injection of cracks**, **impregnations** and **sealing** using **fast-curing mineral materials** or **synthetic resins** that are **adapted to the relevant requirements**.
- **Removal and installation of particularly pressure-resistant and fast-curing mineral industrial coverings** that are **fully usable and resilient again 24 hours after installation**.



- **Anchoring** in the area of a **surface** in accordance with the **Water Resources Act**, which **guarantees** the **durability** and **impermeability** of the fastening solution.



Chemiebau Zimmermann GmbH
Ludwig-Erhard-Straße 8
45891 Gelsenkirchen - Germany

Mail: info@chemiebau-zimmermann.de

Phone: +49 209 38 61 60

www.chemiebau-zimmermann.de



Management Board:

Udo Zimmermann, udo.zimmermann@chemiebau-zimmermann.de

Prof. Dr. Timo Zimmermann, timo.zimmermann@chemiebau-zimmermann.de